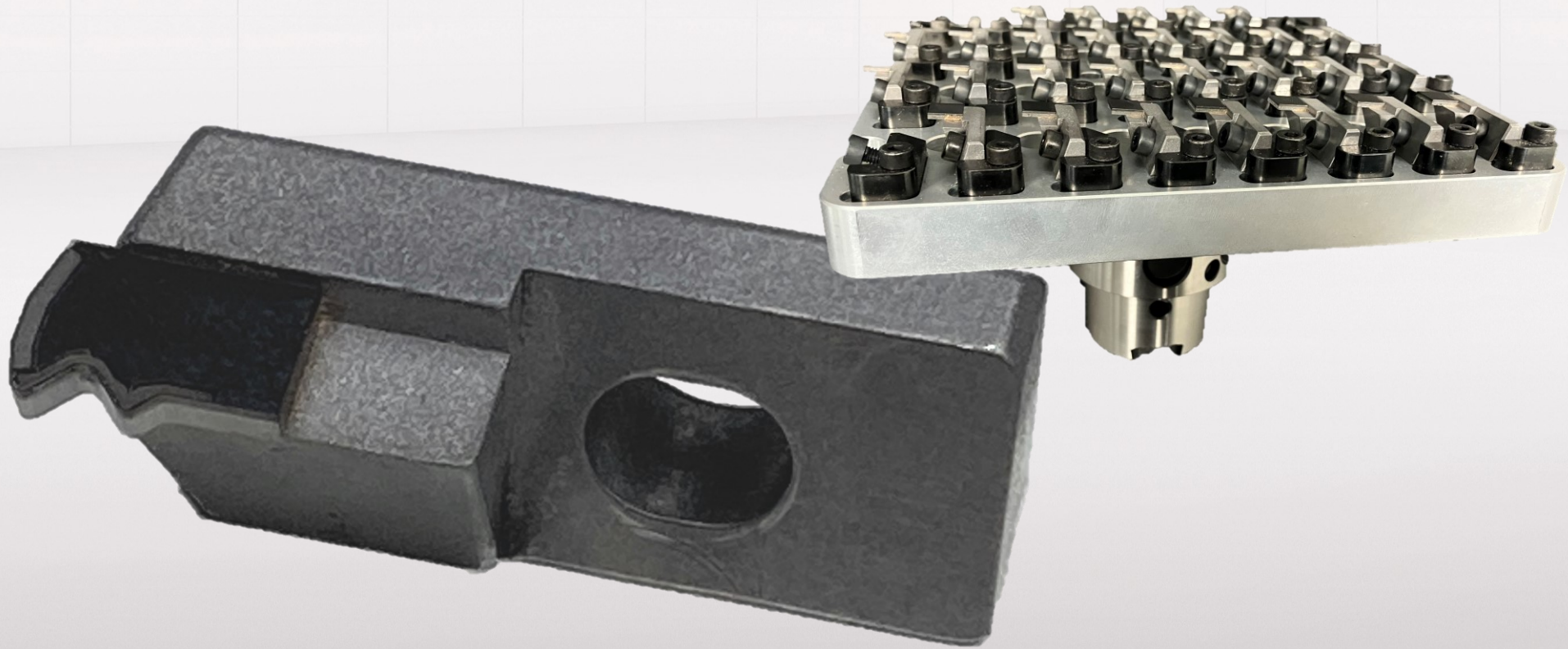
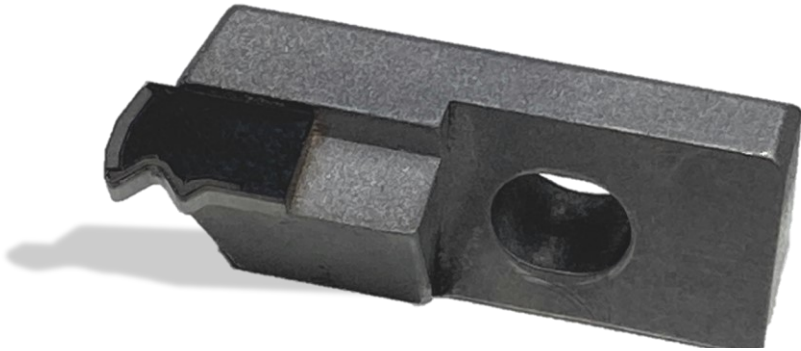


LASERTEC 20 PrecisionTool- LASERED PCD / CBN MILLING CARTRIDGES



DMG MORI



HIGHLIGHT APPLICATION OH 2024

TECHNOLOGY: LASERTEC PrecisionTool

Industry: Automotive

Material: PCD

Dimension: 28 x 10 x 9 mm

Cycle Time: 18 min

12 min cutting edge

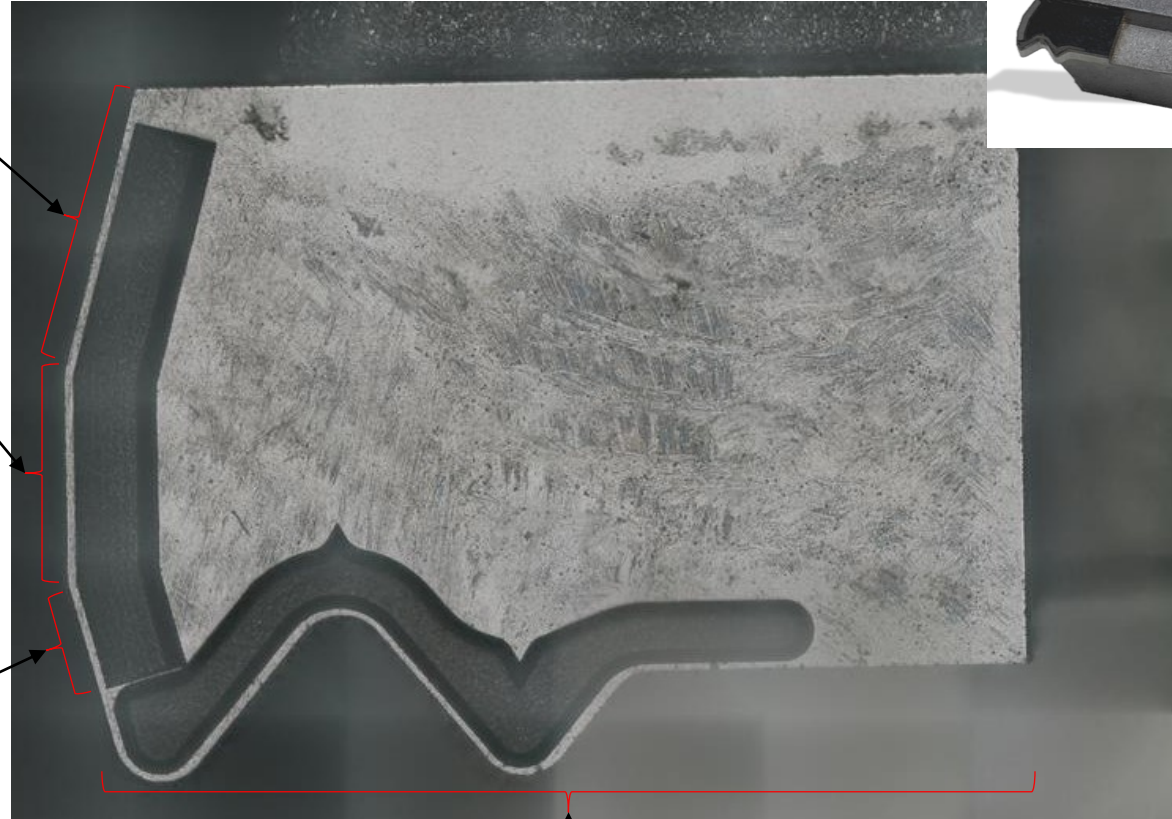
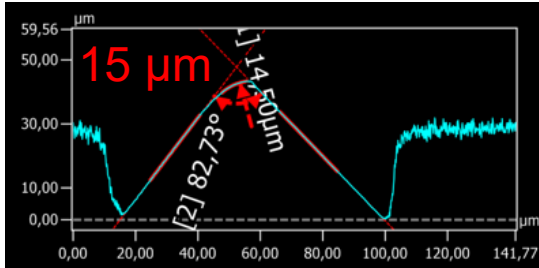
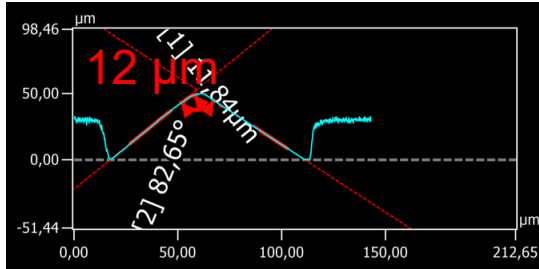
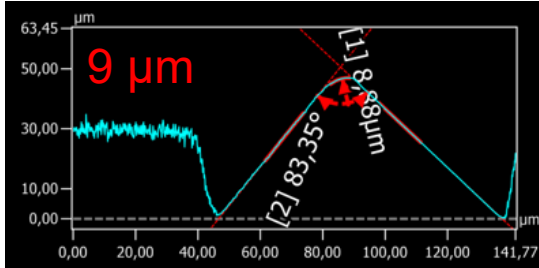
3 min chip breakers

3 min probing

BENEFITS:

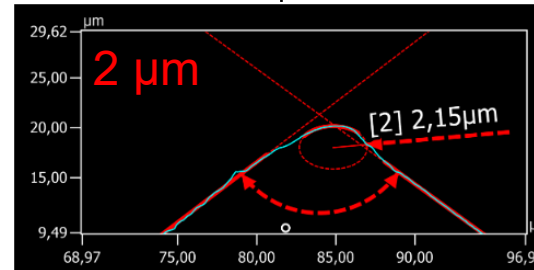
- + Contact-free laser machining without tool wear
- + Cutting edge radius of 2 μm in standard or 6, 9, 12 or 15 μm on demand
- + Machinability of Advanced Materials (PCD, CBN, CVD)
- + 24/7 automation with PH 10 for autonomous machining up to 10 days!

Cutting edge radii



APPLICATION REPORT

Total machining time: 18 min
 Edge radii 2, 9, 12, 15 µm
 Cutting edge Ra value: 0,13 µm
 Chip breaker Ra value: 0,36 µm



Chip breaker design

